

Scholar Uniform and Dress Code Policies

ALL CAMPUSES

Uniform and Grooming, (See pictures)

At SJCA, scholars wear uniforms to eliminate distractions, to level the playing field, and to remind ourselves that we are doing important work.

The spirit of the uniform policy is that scholars will dress and groom themselves in a manner that is traditional, not obstructive, and not distracting.

Scholars must be in uniform in order to attend class. Scholars not in uniform will be sent to the office and must call a parent or guardian. Parents will either bring acceptable attire, or scholars will be sent home. These absences are not excused.

The uniform and dress code policy is that scholars will dress according to the mandatory and optional items listed on the Board-approved uniform policy for boys and girls, respectively, plus the following series of directives. All uniform criteria is in this Family and Scholar Handbook.

Scholars may wear their own outerwear (coats, sweaters, vests) outside of the school building and on the playground. If they are cold in the classroom, they must wear one of the long sleeve uniform items, or one of the uniform outerwear items.

- **New scholars must be in full uniform within three (3) weeks of the date of their enrollment. During this grace period, scholars must wear clothes that are similar in color and style. Any extensions must show proof of delayed shipping. Uniform pieces from prior years will no longer be permitted after June 30, 2024. New pants, shorts, skirts, and skorts must include the small SJCA logo on each item.**
- All scholars must be in approved uniforms at all times (unless approved by administration). The uniform must be worn properly according to uniform guidelines while on school grounds, including the parking lot. No other clothing other than uniform tops and bottoms are permitted. No outside tops, jeans, bottoms, or outerwear are permitted in the building.
- Shoes should not have more than half an inch sole. Heels should not be more than one inch. Stilettos are not permitted.
- Shoes and belts are to be completely black or brown. Boots, thick soled shoes, and heels are not permitted.
- Light-up shoes are not permitted.
- Uniform guidelines are updated and posted in this Family and Scholar Handbook.
- All shirts must be tucked in at all times while on school grounds, including the parking lot.
- All girls' and boys' polo shirts may have the top button unbuttoned. All other buttons must be buttoned.
- Girls are not permitted to wear their socks above their knees.
- Girls may wear opaque navy-blue tights. No pantyhose or leggings.
- Shorts and skirts shall fall no higher than the top of the knee as measured when the scholar is standing. Pants must not be too tight.
- Should a scholar require reasonable uniform alterations based on religion, disability, or medical condition, please contact administration.

Scholar Uniform and Dress Code Policies, **ALL CAMPUSES** Continued

Uniform and Grooming, continued

- Scholars may use any backpack as long as it is clean and tasteful.
- Rolling backpacks are discouraged due to the congested hallway traffic. They must be approved by the Dean of Academics for lower school and the Dean of Students for upper school.
- Hair must be clean, neat, and styled traditionally. Only natural colors are allowed. Hair may not be partially shaved in any way - buzzcuts and head shaving is allowed only if it includes the entire head, not partially. Boys traditional haircut is defined as hairstyle that has hair long enough to comb on top, a defined or deconstructed side or center part, and a short, semi short, or medium length, back and sides – the hair must be neatly groomed, not touch the collar, and may not be worn in a ponytail. No mullets allowed.
- Girls may wear neat bows, barrettes, headbands, and "scrunchies" are permissible so long as they coordinate with the uniform (white, blue, yellow or light blue) and are smaller than 2" in diameter.
- Bows should not be excessively large and distracting. Headbands must not have objects protruding from them (i.e., cat ears, happy birthday, etc...)
- Hair must be natural looking and conservative in its color and style (i.e., no feathers or threads, bleaching or unnatural streaking or highlighting, no deep/bright reds or oranges, no artificial jet-black coloring, and no unnatural colors). (See photo).
- Modest jewelry is allowed such as one to two bracelets and/or one small necklace with neutral colors (beige, grey, navy, white, gold, silver, or pearls) and limited in length to the neckline (see photo) so that it will not get caught on anything and become a hazard. The necklace and/or bracelet must not be thicker than the width of a pencil. An object that has a purpose other than jewelry cannot be worn as jewelry (i.e., chains or collars). Girls may wear up to two earrings per ear on the bottom of the earlobe, and the earrings must not be larger than a dime. Piercings are not permitted on any other part of the body. No stretched piercings (gauge) or holes may be visible. Boys are not permitted to wear jewelry, including earrings and necklaces. One or two bracelets may be worn in good taste on the wrist. No scrunchies may be worn on the wrist.
- Watches are approved but they must be neutral in color.
- Tattoos must be not be visible.
- Makeup must look natural and is not permitted in grades K-5. The following is not permitted: dark shades of lipstick, eyeshadow or blush, dark eyeliner or cat eyes, penciled eyebrows, or anything else that does not look natural.
- Nail Polish: Girls may wear colors as long as their nails are neat and trimmed (faded and chipped polish must be removed). Excessively long fingernails are not permitted. Nail polish should not be flashy and distracting, nor should it contain any writing. Boys are not permitted to wear nail polish.

Scholar Uniform and Dress Code Policies, **ALL CAMPUSES** Continued

Uniform and Grooming, continued

- No hats or sunglasses inside the building. Hats include visors and bandanas. Religious headgear is authorized.
- Good personal hygiene is required at all times. This includes wearing neat, clean clothing. Strong/offensive body odors or excessive use of perfumes or cologne are inappropriate.
- Should a scholar require reasonable uniform alterations based on religion, disability, or medical condition, please contact administration.
- All items should be labeled with scholar's first and last name.
- Lost and Found is located in the cafeteria or another designated area on campus. It is the scholar's/parent's responsibility to search for items in these areas. Unclaimed items are donated quarterly.
- When in question parents and scholars should refer to the photos in this handbook.

** Any questionable uniform or grooming issues must have the final approval of the Headmaster.

Toileting

All scholars of SJCA must be independent in toileting unless there is a documented medical condition. On occasion, scholars may have "accidents." When an "accident" occurs, it is the responsibility of the parent to assist your child and to provide clean clothing.

If there are repeated "accidents," a meeting with the parents and an administrator will be held to evaluate the situation. Appropriate action will be taken based on what is in the best interest of all scholars and the school.

Any scholar that is uncomfortable using a group bathroom may request their teacher to use a designated private restroom. A private restroom is available in the SJCA health room or another designated area on campus.

Formal Uniform Requirements

All uniform items must be purchased from the Lands' End site. All pieces of the formal uniform are required for Formal Dress Uniform Day. There may be other events requiring formal uniform during the year with advanced notice.

Scholar Uniform and Dress Code Policies, **ALL CAMPUSES** Continued

Formal Uniform Requirements, continued

RULES FOR ALL GRADES

- Socks for girls - navy blue knee-length socks or navy stockings. Girls may wear opaque navy-blue tights. No pantyhose or leggings
- Socks for boys - navy crew-length socks
- A black or brown belt must be worn with pants and shorts (K-1st grade excluded)
- Dresses, skirts and skorts must be to the knee; we recommend purchasing below the knee for longer use
- Shoes- NO canvas for formal days- solid black with solid black soles or brown with solid brown soles- the soles may be slightly lighter, but they must be the same color. No Sperry's (including any boat or Hey Dude shoes) allowed with the formal uniform
- Blue or black shorts must be worn under all dresses and skirts. The shorts are not permitted to show below the hemline of the dress or skirt

Scholar Uniform and Dress Code Policies, **Fleming Island Campus**

KG – 5th GRADE SCHOLARS – Fleming Island Campus

Girls K – 3rd

- Light blue button-down short or long sleeve top
- Clear Blue plaid jumper

Girls 4th – 5th

- Light blue button-down short or long sleeve top
- Clear Blue plaid skirt
- Navy cross tie
- Optional sweater vest or long sleeve sweater is permitted over the light blue button-down shirt.

Boys

- Light blue button-down short or long sleeve shirt
- Solid navy necktie
- Navy pants (shorts may not be worn with formal uniform)
- Optional sweater vest or long sleeve sweater is permitted over the light blue button-down shirt.

6th -8th GRADE SCHOLARS – Fleming Island Campus

Girls

- White button-down short or long sleeve shirt
- Classic Navy plaid skirt
- Classic Navy plaid necktie
- Optional sweater vest or long sleeve sweater is permitted over the white button-down shirt.

Boys

- White button-down short or long sleeve shirt
- Navy necktie
- Khaki pants (shorts may not be worn with formal uniform)
- Optional sweater vest or long sleeve sweater is permitted over the white button-down shirt.

Scholar Uniform and Dress Code Policies, **Fleming Island Campus** Continued

Formal Uniform Requirements, continued

9th – 12th GRADE SCHOLARS – Fleming Island Campus

Girls

- White button-down short or long sleeve top
- Navy necktie
- Classic Navy plaid skirt
- Optional sweater vest or long sleeve sweater is permitted over the white button-down shirt.

Boys

- White button-down short or long sleeve shirt
- Striped (navy and gold) necktie
- Khaki pants (shorts may not be worn with formal uniform)
- Optional sweater vest or long sleeve sweater is permitted over the white button-down shirt.

Everyday Uniform Requirements – Fleming Island Campus

All uniform items must be purchased from the Lands' End site. If the item is shown for your scholar's grade level, it is grade-appropriate for the scholar.

**Formal uniform items are not permitted on non-formal days (plaid is not permitted on non-formal days).*

RULES FOR ALL GRADES

- Socks – Navy blue or black crew-length 3" (or higher) socks or stockings- no leggings or ankle socks. Girls may wear opaque navy-blue tights. No pantyhose or leggings.
- A black or brown belt must be worn with pants or shorts (K-1st grade excluded)
- Dresses, skirts and skorts must be to the knee; we recommend purchasing below the knee for longer use
- Shoes – solid black or brown, leather/canvas, solid black or brown soles- the soles may be slightly lighter, but they must be the same color
- Blue or black shorts should be worn under all skirts and dresses and must not be visible below bottom hemline

KG – 5th GRADE SCHOLARS – Fleming Island Campus

Girls

- Light blue polo tops
- Navy blue bottoms – dress, jumper, pants, shorts, skirts, or skorts
- Optional sweater vest or long sleeve sweater is permitted over the light blue polo top only (not over dress or jumper)

Boys

- Light blue polo shirt
- Navy blue bottoms – pants or shorts
- Optional sweater vest or long sleeve sweater is permitted over the light blue polo shirt

Scholar Uniform and Dress Code Policies, Fleming Island Campus Continued

Everyday Uniform Requirements, continued

6th – 8th GRADE SCHOLARS – Fleming Island Campus

Girls

- Royal blue polo tops
- Khaki or navy bottoms – pants, shorts, skirts, or skorts

Boys

- Royal blue polo shirt
- Khaki bottoms – pants or shorts

9th – 12th GRADE SCHOLARS – Fleming Island Campus

Girls

- Navy blue polo tops
- Khaki or navy bottoms – pants, shorts, skirts, or skorts

Boys

- Navy blue polo shirt
- Khaki bottoms – pants or shorts

Scholars may embroider their names on uniform outerwear only – sweaters, cardigans, jackets, etc. The font should be Times New Roman or Georgia, printed or cursive, thread to match the gold in the SJCA crest and letters no more than one inch tall. The embroidery may contain first or last name, full name, or initials.

PE Uniform Guidelines and ordering - Fleming Island Campus

Girls

Tops:

- SJCA PE Short or Long Sleeve Shirt- Grey only
- SJCA PE Sweatshirts

Bottoms:

- SJCA PE Uniform Shorts
- SJCA PE Sweatpants

Shoes and Socks:

- Must be solid black, navy, or white. The style must be ankle cut, crew, or any SJCA approved uniform sock. No designs permitted on socks
- Scholars should wear athletic shoes that are not flashy or distracting in color. Light-up shoes are not permitted.

All PE top and bottom items must be purchased through the approved vendor Stryker Custom Designs: <https://strykercustomdesigns.com/>

Scholar Uniform and Dress Code Policies, Orange Park Campus

KG – 6th GRADE SCHOLARS – Orange Park Campus

Girls K – 3rd

- Light blue button-down short or long sleeve top
- Clear Blue plaid jumper

Girls 4th – 6th

- Light blue button-down short or long sleeve top
- Clear Blue plaid skirt
- Navy cross tie
- Optional sweater vest or long sleeve sweater is permitted over the light blue button-down shirt.

Boys

- Light blue button-down short or long sleeve shirt
- Solid navy necktie
- Navy pants (shorts may not be worn with formal uniform)
- Optional sweater vest or long sleeve sweater is permitted over the light blue button-down shirt.

7th -8th GRADE SCHOLARS – Orange Park Campus

Girls

- White button-down short or long sleeve shirt
- Classic Navy plaid skirt
- Classic Navy plaid necktie
- Optional sweater vest or long sleeve sweater is permitted over the white button-down shirt.

Boys

- White button-down short or long sleeve shirt
- Navy necktie
- Khaki pants (shorts may not be worn with formal uniform)
- Optional sweater vest or long sleeve sweater is permitted over the white button-down shirt.

9th – 12th GRADE SCHOLARS – Orange Park Campus

Girls

- White button-down short or long sleeve top
- Navy necktie
- Classic Navy plaid skirt
- Optional sweater vest or long sleeve sweater is permitted over the white button-down shirt.

Boys

- White button-down short or long sleeve shirt
- Striped (navy and gold) necktie
- Khaki pants (shorts may not be worn with formal uniform)
- Optional sweater vest or long sleeve sweater is permitted over the white button-down shirt.

Everyday Uniform Requirements – Orange Park Campus

All uniform items must be purchased from the Lands' End site. If the item is shown for your scholar's grade level, it is grade-appropriate for the scholar.

**Formal uniform items are not permitted on non-formal days (plaid is not permitted on non-formal days).*

RULES FOR ALL GRADES

- Socks – Navy blue or black crew-length 3” (or higher) socks or stockings- no leggings or ankle socks. Girls may wear opaque navy-blue tights. No pantyhose or leggings.
- A black or brown belt must be worn with pants or shorts (K-1st grade excluded)
- Dresses, skirts and skorts must be to the knee; we recommend purchasing below the knee for longer use
- Shoes – solid black or brown, leather/canvas, solid black or brown soles- the soles may be slightly lighter, but they must be the same color
- Blue or black shorts should be worn under all skirts and dresses and must not be visible below bottom hemline

KG – 6th GRADE SCHOLARS – Orange Park Campus

Girls

- Light blue polo tops
- Navy blue bottoms – dress, jumper, pants, shorts, skirts, or skorts
- Optional sweater vest or long sleeve sweater is permitted over the light blue polo top only (not over dress or jumper)

Boys

- Light blue polo shirt
- Navy blue bottoms – pants or shorts
- Optional sweater vest or long sleeve sweater is permitted over the light blue polo shirt

7th – 8th GRADE SCHOLARS – Orange Park Campus

Girls

- Royal blue polo tops
- Khaki or navy bottoms – pants, shorts, skirts, or skorts

Boys

- Royal blue polo shirt
- Khaki bottoms – pants or shorts

9th – 12th GRADE SCHOLARS – Orange Park Campus

Girls

- Navy blue polo tops
- Khaki or navy bottoms – pants, shorts, skirts, or skorts

Boys

- Navy blue polo shirt
- Khaki bottoms – pants or shorts

Scholars may embroider their names on uniform outerwear only – sweaters, cardigans, jackets, etc. The font should be Times New Roman or Georgia, printed or cursive, thread to match the gold in the SJCA crest and letters no more than one inch tall. The embroidery may contain first or last name, full name, or initials.

PE Uniform Guidelines and ordering – *Orange Park Campus*

Tops:

- SJCA PE Short or Long Sleeve Shirt- Grey only
- SJCA PE Sweatshirts

Bottoms:

- SJCA PE Uniform Shorts
- SJCA PE Sweatpants

Shoes and Socks:

- Must be solid black, navy, or white. The style must be ankle cut, crew, or any SJCA approved uniform sock. No designs permitted on socks
- Scholars should wear athletic shoes that are not flashy or distracting in color. Light-up shoes are not permitted.

All PE top and bottom items must be purchased through the approved vendor Stryker Custom Designs: <https://strykercustomdesigns.com/>

Uniforms and Financial Assistance

The school will not allow financial need to limit access to SJCA, and this includes access to uniforms. At minimum, SJCA will facilitate the use of SJCA's used uniform exchange.

Used Uniform Store

When it is practicable, the school will facilitate a used uniform store/exchange.

SJCA Approved Spirit Day Attire – **ALL CAMPUSES**

At the discretion of the Headmaster additional dress down/spirit days may be permitted and rules for clothing will be emailed to families ahead of time.

Tops

- SJCA spirit t-shirt – Shirts must be purchased from one of our approved vendors. Links to these vendors can be found on our website.
- PE shirts
- Middle and High school house shirts
- SJCA sponsored club shirts
- SJCA polo shirt

Bottoms

- Jeans or jean shorts to the knee. Jeans may not have any rips, tears, holes. No jeggings permitted.
- Uniform shorts or any khaki or navy-blue shorts to the knees. No athletic shorts unless you are in K-5th and have PE that day.

Shoes

- Scholars may wear their choice of shoes except for flip flops, crocs, or sandals. No open toed or backless shoes permitted.

SJCA Dress Code for School Dances – **ALL CAMPUSES**

Middle School Dances

- “Casual”- Spirit wear, jeans, and t-shirts. Scholars may change to wear casual non-SJCA clothes, but they must still follow Spirit Day Guidelines. Skirts/dresses may not be shorter than 4” above the knee.

High School Dances

- Homecoming- Usually a “themed” dance. Attire that fits the theme is appropriate and fun. However, all scholars must adhere to the guidelines stated on the dance permission slip.
- “Semi-formal”- Dances such as the Sweetheart Ball, Father/Daughter Dance, etc. are considered semi-formal. Appropriate attire is nice, but not formal. One would wear what is expected at a recital or church function.
 - Boys** - slacks, button-down shirt, tie. A jacket is optional.
 - Girls** - Dress/skirt no shorter than 4” above the knee, no low-cut styles in front or back.
- “Formal”- This is the proper attire for Prom.
 - Boys** - Tuxedo or suit/tie/jacket
 - Girls** - Formal gown or dress

**For all dances, please refer to the SJCA Dance Guidelines and Permission Form for further clarification and photo examples.

St. Johns Classical Academy Fleming Island Uniform Guidelines

GIRLS GRAMMAR SCHOOL GRADES K-3



Additional styles available at the school uniform store at www.LandsEnd.com
Fleming Island Campus School Code: 900188566

St. Johns Classical Academy Fleming Island Uniform Guidelines

GIRLS GRAMMAR SCHOOL GRADES 4-5



Additional styles available at the school uniform store at www.LandsEnd.com
Fleming Island Campus School Code: 900188566

St. Johns Classical Academy Fleming Island Uniform Guidelines

BOYS GRAMMAR SCHOOL GRADES K-1



Additional styles available at the school uniform store at www.LandsEnd.com
Fleming Island Campus School Code: 900188566

LANDS' END
SCHOOL

St. Johns Classical Academy Fleming Island Uniform Guidelines

BOYS GRAMMAR SCHOOL GRADES 2-5

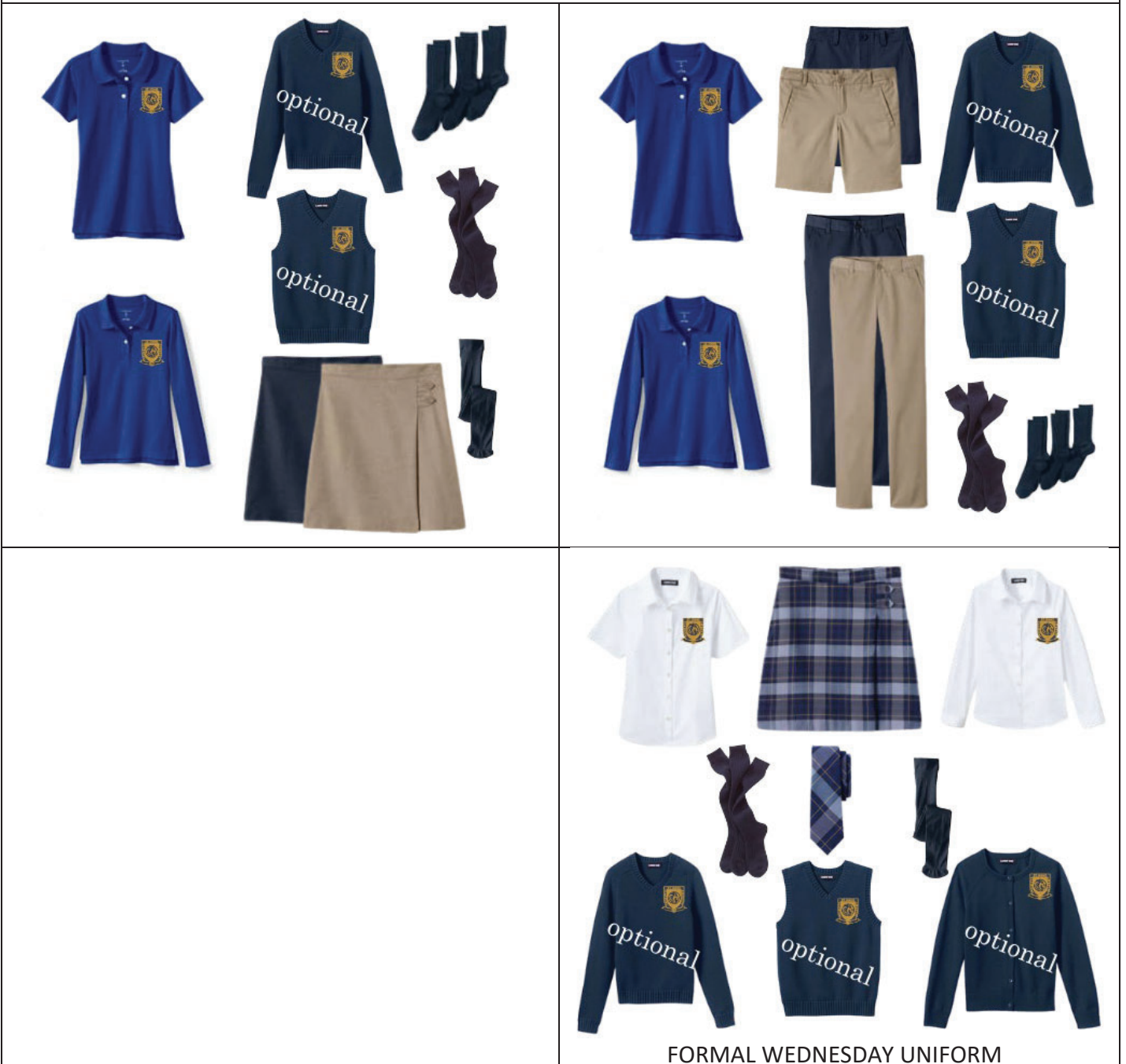


Additional styles available at the school uniform store at www.LandsEnd.com
Fleming Island Campus School Code: 900188566

LANDS' END
SCHOOL

St. Johns Classical Academy Fleming Island Uniform Guidelines

GIRLS MIDDLE SCHOOL GRADES 6-8



FORMAL WEDNESDAY UNIFORM

Additional styles available at the school uniform store at www.LandsEnd.com School Code: 900188566

St. Johns Classical Academy Fleming Island Uniform Guidelines

BOYS MIDDLE SCHOOL GRADES 6-8



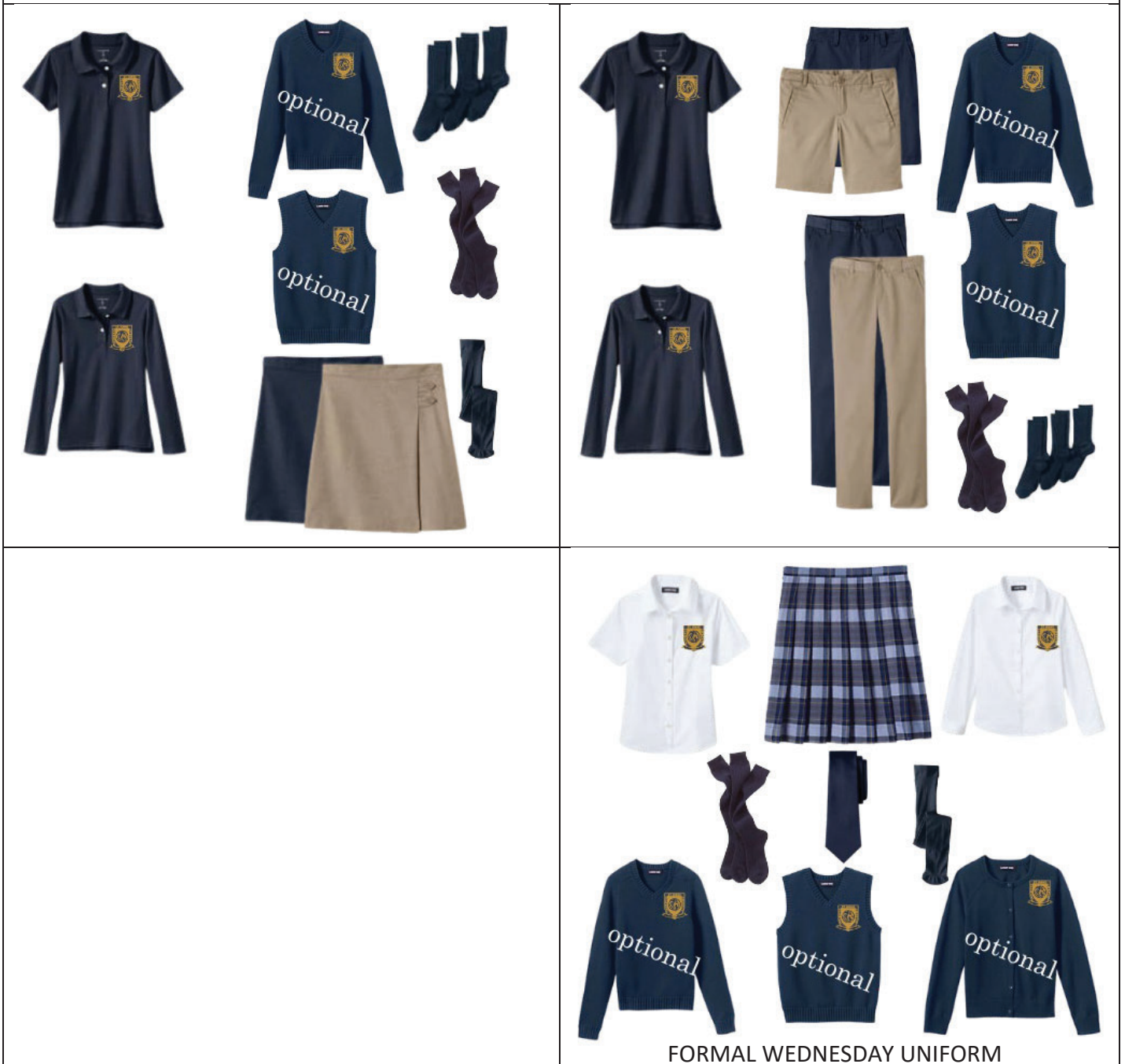
FORMAL WEDNESDAY UNIFORM

Additional styles available at the school uniform store at www.LandsEnd.com School Code: 900188566



St. Johns Classical Academy Fleming Island Uniform Guidelines

GIRLS SENIOR HIGH SCHOOL GRADES 9-12



Additional styles available at the school uniform store at www.LandsEnd.com School Code: 900188566

St. Johns Classical Academy Fleming Island Uniform Guidelines

BOYS SENIOR HIGH SCHOOL GRADES 9-12



Additional styles available at the school uniform store at www.LandsEnd.com School Code: 900188566

LANDS' END
SCHOOL

St. Johns Classical Academy Uniform Guidelines

PE UNIFORMS



Conservative athletic shoes are required. Light-up soles are not permitted.

Socks should be ankle length or crew length and navy, black or white.

Leggings / Sweat Pants are NOT PERMITTED under PE shorts.

PE Uniforms should be ordered through Stryker Custom Designs

St. Johns Classical Academy Uniform Guidelines

Jewelry

- Modest jewelry is allowed such as one to two bracelets and/or one small necklace with neutral colors (beige, grey, navy, white, gold, silver, or pearls) and limited in length to the neckline (see photo) so that it will not get caught on anything and become a hazard.
- An object that has a purpose other than jewelry cannot be worn as jewelry (i.e., chains or collars).
- Girls may wear up to two earrings per ear on the bottom of the earlobe, and the earrings must not be larger than a dime. Piercings are not permitted on any other part of the body. No stretched piercings (gauge) or holes may be visible.
- Boys are not permitted to wear jewelry, including earrings and necklaces. One or two bracelets may be worn in good taste on the wrist. No scrunchies may be worn on the wrist.



Hair and Hair Accessories

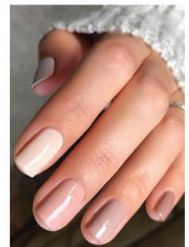
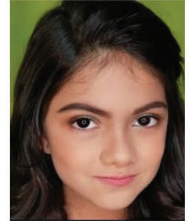
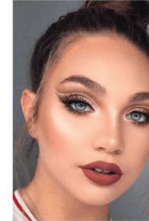
- Hair must be clean, neat, and styled traditionally. Only natural colors are allowed.
- Hair must be natural looking and conservative in its color and style (i.e., no feathers or threads, bleaching or unnatural streaking/highlighting, no deep/bright reds or oranges, no artificial jet-black coloring, and no unnatural colors).
- Girls may wear neat bows, barrettes, headbands, and "scrunchies" are permissible so long as they coordinate with the uniform (white, blue, yellow or light blue) and are smaller than 2" in diameter.
- Bows should not be excessively large and distracting. Headbands must not have objects protruding from them (i.e., cat ears, happy birthday, etc....) and they must be neutral or school colors.
- Boys' traditional haircut is defined as a hairstyle that has hair long enough to comb on top, a defined or deconstructed side or center part, and a short, semi-short, or medium length, back and sides – the hair must be neatly groomed, not touch the collar, and may not be worn in a ponytail. No mullets allowed."



St. Johns Classical Academy Uniform Guidelines

Makeup and Nail Polish

- Makeup must look natural and is not permitted in grades K-5.
- The following is not permitted: dark shades of lipstick, eyeshadow or blush, dark eyeliner or cat eyes, penciled eyebrows, or anything else that does not look natural.
-
- Nail Polish: Girls may wear colors as long as their nails are neat and trimmed (faded and chipped polish must be removed). Excessively long fingernails are not permitted. Nail polish should not be flashy and distracting, nor should it contain any writing. Boys are not permitted to wear nail polish.



Shoes

Approved Everyday Shoes:



Reminder-- **Formal Day shoes must be dark brown or black and non-canvas.** Here are examples:



Approved P.E. Shoe Examples: all athletic shoes are allowed; however we ask that they are kept as neutral as possible in color (avoid bright and flashy)



Not Approved:



Formal Day Shoes MAY NOT be canvas, only leather dress shoes are permitted. Heels are not permitted. Sperry's and other "boat shoes" are permitted for everyday uniforms only, NOT FORMAL DAY.

St. Johns Classical Academy Orange Park Uniform Guidelines

GIRLS GRAMMAR SCHOOL GRADES K-3



Additional styles available at the school uniform store at www.LandsEnd.com
Orange Park Campus School Code: 900200197

St. Johns Classical Academy Orange Park Uniform Guidelines

GIRLS GRAMMAR SCHOOL GRADES 4-6



Additional styles available at the school uniform store at www.LandsEnd.com
Orange Park Campus School Code: 900200197

St. Johns Classical Academy Orange Park Uniform Guidelines

BOYS GRAMMAR SCHOOL GRADES K-1



FORMAL WEDNESDAY UNIFORM

Additional styles available at the school uniform store at www.LandsEnd.com
Park Campus School Code: 900200197

LANDS' END
SCHOOL

St. Johns Classical Academy Orange Park Uniform Guidelines

BOYS GRAMMAR SCHOOL GRADES 2-6



Additional styles available at the school uniform store at www.LandsEnd.com
Code: 900188566 Orange Park Campus School Code: 900200197

LANDS' END
SCHOOL

St. Johns Classical Academy Uniform Guidelines

PE UNIFORMS



Conservative athletic shoes are required. Light-up soles are not permitted.

Socks should be ankle length or crew length and navy, black or white.

Leggings / Sweat Pants are NOT PERMITTED under PE shorts.

PE Uniforms should be ordered through Stryker Custom Designs

St. Johns Classical Academy Uniform Guidelines

Jewelry

- Modest jewelry is allowed such as one to two bracelets and/or one small necklace with neutral colors (beige, grey, navy, white, gold, silver, or pearls) and limited in length to the neckline (see photo) so that it will not get caught on anything and become a hazard.
- An object that has a purpose other than jewelry cannot be worn as jewelry (i.e., chains or collars).
- Girls may wear up to two earrings per ear on the bottom of the earlobe, and the earrings must not be larger than a dime. Piercings are not permitted on any other part of the body. No stretched piercings (gauge) or holes may be visible.
- Boys are not permitted to wear jewelry, including earrings and necklaces. One or two bracelets may be worn in good taste on the wrist. No scrunchies may be worn on the wrist.



Hair and Hair Accessories

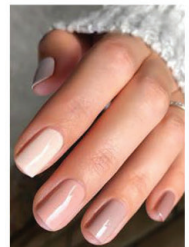
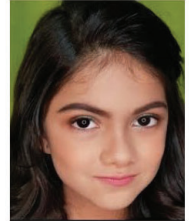
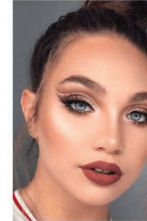
- Hair must be clean, neat, and styled traditionally. Only natural colors are allowed.
- Hair must be natural looking and conservative in its color and style (i.e., no feathers or threads, bleaching or unnatural streaking/highlighting, no deep/bright reds or oranges, no artificial jet-black coloring, and no unnatural colors).
- Girls may wear neat bows, barrettes, headbands, and "scrunchies" are permissible so long as they coordinate with the uniform (white, blue, yellow or light blue) and are smaller than 2" in diameter.
- Bows should not be excessively large and distracting. Headbands must not have objects protruding from them (i.e., cat ears, happy birthday, etc....) and they must be neutral or school colors.
- Boys' traditional haircut is defined as a hairstyle that has hair long enough to comb on top, a defined or deconstructed side or center part, and a short, semi-short, or medium length, back and sides – the hair must be neatly groomed, not touch the collar, and may not be worn in a ponytail. No mullets allowed."



St. Johns Classical Academy Uniform Guidelines

Makeup and Nail Polish

- Makeup must look natural and is not permitted in grades K-5.
- The following is not permitted: dark shades of lipstick, eyeshadow or blush, dark eyeliner or cat eyes, penciled eyebrows, or anything else that does not look natural.
-
- Nail Polish: Girls may wear colors as long as their nails are neat and trimmed (faded and chipped polish must be removed). Excessively long fingernails are not permitted. Nail polish should not be flashy and distracting, nor should it contain any writing. Boys are not permitted to wear nail polish.



Shoes

Approved Everyday Shoes:



Reminder-- **Formal Day shoes must be dark brown or black and non-canvas.** Here are examples:



Approved P.E. Shoe Examples: all athletic shoes are allowed; however we ask that they are kept as neutral as possible in color (avoid bright and flashy)



Not Approved:



Formal Day Shoes MAY NOT be canvas, only leather dress shoes are permitted. Heels are not permitted. Sperry's and other "boat shoes" are permitted for everyday uniforms only, NOT FORMAL DAY.